

*NPHPSP Local Public Health System Performance Assessment Instrument*  
**Summary of Performance Scores by EPHS and Indicators**

*New Jersey State : NJ0721*

*Date Submitted: 20SEP2005*

<b>Description</b>	<b>Score</b>
<b>EPHS 1: Monitor Health Status</b>	<b>39.22</b>
<b>1.1 Population Based Community Health Profile</b>	<b>41.43</b>
1_1_1 Conducted community health assessment?	0.00
1_1_2 Compile data into community health profile?	0.00
1_1_3 Access to community demographic characteristics?	100.00
1_1_4 Access to community socioeconomic characteristics?	100.00
1_1_5 Access to health resource availability data?	20.00
1_1_6 Access to quality of life data for the community?	0.00
1_1_7 Access to behavioral risk factors for the community?	43.33
1_1_8 Access to community environmental health indicators?	20.00
1_1_9 Access to social and mental health data?	20.00
1_1_10 Access to maternal and child health data?	76.67
1_1_11 Access to death, illness, injury data?	100.00
1_1_12 Access to communicable disease data?	100.00
1_1_13 Access to sentinel events data?	0.00
1_1_14 Community-wide use of health assessment or CHP data promoted?	0.00
<b>1.2 Access to and Utilization of Current Technology</b>	<b>0.00</b>
1_2_1 State-of-the-art technology to support databases?	0.00
1_2_2 Access to geocoded health data?	0.00

*Centers for Disease Control and Prevention*

*Public Health Practice Program Office*

*Division of Public Health Systems Development and Research*

*National Public Health Performance Standards Program*

*1-800-PHPP0-49 or 1-800-747-7649*

*NPHPSP Local Public Health System Performance Assessment Instrument*  
**Summary of Performance Scores by EPHS and Indicators**

*New Jersey State : NJ0721*

*Date Submitted: 20SEP2005*

<b>Description</b>	<b>Score</b>
<b>1_2_3 Use geographic information systems (GIS)?</b>	<b>0.00</b>
<b>1_2_4 Use computer-generated graphics to identify trends and/or compare data?</b>	<b>0.00</b>
<b>1_2_5 CHP available in electronic version?</b>	<b>0.00</b>
<b>1.3 Maintenance of Population Health Registries</b>	<b>76.24</b>
<b>1_3_1 Maintain and/or contribute to one or more population health registries?</b>	<b>75.82</b>
<b>1_3_2 Used information from population health registries?</b>	<b>76.67</b>
<b>EPHS 2: Diagnose and Investigate Health Problems</b>	<b>84.83</b>
<b>2.1 Identification and Surveillance of Health Threats</b>	<b>75.81</b>
<b>2_1_1 Submit timely reportable disease information to state or LPHS?</b>	<b>100.00</b>
<b>2_1_2 Monitor changes in occurrence of health problems and hazards?</b>	<b>49.17</b>
<b>2_1_3 Have a comprehensive surveillance system?</b>	<b>73.00</b>
<b>2_1_4 Use IT for surveillance?</b>	<b>66.00</b>
<b>2_1_5 Access to Masters or Doctoral level epidemiologists and/or statisticians?</b>	<b>100.00</b>
<b>2_1_6 Procedure to alert communities about health threats/disease outbreaks?</b>	<b>66.67</b>
<b>2.2 Plan for Public Health Emergencies</b>	<b>95.13</b>
<b>2_2_1 Identified public health disasters and emergencies?</b>	<b>100.00</b>
<b>2_2_2 Have an emergency preparedness and response plan?</b>	<b>80.53</b>

*Centers for Disease Control and Prevention*

*Public Health Practice Program Office*

*Division of Public Health Systems Development and Research*

*National Public Health Performance Standards Program*

*1-800-PHPP0-49 or 1-800-747-7649*

***NPHPSP Local Public Health System Performance Assessment Instrument  
Summary of Performance Scores by EPHS and Indicators***

*New Jersey State : NJ0721*

*Date Submitted: 20SEP2005*

<b>Description</b>	<b>Score</b>
<b>2_2_3 Plan been tested through one or more “mock events” in the past year?</b>	<b>100.00</b>
<b>2_2_4 Plan been reviewed or revised within the past two years?</b>	<b>100.00</b>
<b>2.3 Investigate and Respond to Public Health Emergencies</b>	<b>68.38</b>
<b>2_3_1 Designated an Emergency Response Coordinator?</b>	<b>76.67</b>
<b>2_3_2 Have current epidemiological case investigation protocols?</b>	<b>56.67</b>
<b>2_3_3 Written protocols for implementing program of source and contact tracing?</b>	<b>39.17</b>
<b>2_3_4 Roster of response personnel with technical expertise?</b>	<b>69.41</b>
<b>2_3_5 Evaluate public health emergency response incidents?</b>	<b>100.00</b>
<b>2.4 Laboratory Support for Investigation of Health Threats</b>	<b>100.00</b>
<b>2_4_1 Access to laboratory services to support investigations?</b>	<b>100.00</b>
<b>2_4_2 Access to laboratories capable of meeting routine diagnostic and surveillance needs?</b>	<b>100.00</b>
<b>2_4_3 Documentation that laboratories are licensed and/or credentialed?</b>	<b>100.00</b>
<b>2_4_4 Current guidelines or protocols for handling laboratory samples?</b>	<b>100.00</b>
<b>EPHS 3: Inform, Educate, and Empower People</b>	<b>45.89</b>
<b>3.1 Health Education</b>	<b>43.64</b>
<b>3_1_1 Information on community health to public and policy leaders?</b>	<b>58.73</b>
<b>3_1_2 Use media to communicate health information?</b>	<b>49.17</b>

*Centers for Disease Control and Prevention*

*Public Health Practice Program Office*

*Division of Public Health Systems Development and Research*

*National Public Health Performance Standards Program*

*1-800-PHPP0-49 or 1-800-747-7649*

*NPHPSP Local Public Health System Performance Assessment Instrument*  
**Summary of Performance Scores by EPHS and Indicators**

*New Jersey State : NJ0721*

*Date Submitted: 20SEP2005*

<b>Description</b>	<b>Score</b>
<b>3_1_3 Sponsor health education programs?</b>	<b>66.67</b>
<b>3_1_4 Assessed public health education activities?</b>	<b>0.00</b>
<b>3.2 Health Promotion Activities</b>	<b>48.14</b>
<b>3_2_1 Implemented health promotion activities?</b>	<b>76.08</b>
<b>3_2_2 Collaborative networks for health promotion established?</b>	<b>68.33</b>
<b>3_2_3 Assessed health promotion activities?</b>	<b>0.00</b>
<b>EPHS 4: Mobilize Community Partnerships</b>	<b>33.37</b>
<b>4.1 Constituency Development</b>	<b>34.96</b>
<b>4_1_1 Process for identifying key constituents?</b>	<b>33.33</b>
<b>4_1_2 Encourage participation of constituents in improving community health?</b>	<b>33.33</b>
<b>4_1_3 Current directory of organizations that comprise the LPHS?</b>	<b>49.17</b>
<b>4_1_4 Use communications strategies to strengthen linkages?</b>	<b>24.00</b>
<b>4.2 Community Partnerships</b>	<b>31.78</b>
<b>4_2_1 Partnerships exist in the community?</b>	<b>66.67</b>
<b>4_2_2 Assure establishment of a broad-based community health improvement committee?</b>	<b>28.67</b>
<b>4_2_3 Assess the effectiveness of community partnerships?</b>	<b>0.00</b>

*Centers for Disease Control and Prevention*

*Public Health Practice Program Office*

*Division of Public Health Systems Development and Research*

*National Public Health Performance Standards Program*

*1-800-PHPPO-49 or 1-800-747-7649*

*NPHPSP Local Public Health System Performance Assessment Instrument*  
**Summary of Performance Scores by EPHS and Indicators**

*New Jersey State : NJ0721*

*Date Submitted: 20SEP2005*

<b>Description</b>	<b>Score</b>
<b>EPHS 5: Develop Policies and Plans</b>	<b>23.94</b>
<b>5.1 Governmental Presence at Local Level</b>	<b>11.11</b>
<b>5_1_1 Includes a local governmental public health entity?</b>	<b>0.00</b>
<b>5_1_2 Assures participation of stakeholders in implementation of community health plan?</b>	<b>0.00</b>
<b>5_1_3 Local governing entity (e.g., local board of health) conducts oversight?</b>	<b>0.00</b>
<b>5_1_4 Local governmental public health entity work with the state public health system?</b>	<b>33.33</b>
<b>5.2 Public Health Policy Development</b>	<b>43.67</b>
<b>5_2_1 Contribute to the development of public health policies?</b>	<b>31.00</b>
<b>5_2_2 Review public health policies at least every two years?</b>	<b>33.33</b>
<b>5_2_3 Advocate for the development of prevention and protection policies?</b>	<b>66.67</b>
<b>5.3 Community Health Improvement Process</b>	<b>12.11</b>
<b>5_3_1 Established a community health improvement process?</b>	<b>24.21</b>
<b>5_3_2 Developed strategies to address community health objectives?</b>	<b>0.00</b>
<b>5.4 Strategic Planning and Alignment</b>	<b>28.89</b>
<b>5_4_1 Each organization in the LPHS conduct a strategic planning process?</b>	<b>66.67</b>
<b>5_4_2 Each organization in the LPHS review its organizational strategic plan?</b>	<b>0.00</b>
<b>5_4_3 Local governmental public health entity conduct strategic planning activities?</b>	<b>20.00</b>

*Centers for Disease Control and Prevention*

*Public Health Practice Program Office*

*Division of Public Health Systems Development and Research*

*National Public Health Performance Standards Program*

*1-800-PHPPO-49 or 1-800-747-7649*

*NPHPSP Local Public Health System Performance Assessment Instrument*  
**Summary of Performance Scores by EPHS and Indicators**

*New Jersey State : NJ0721*

*Date Submitted: 20SEP2005*

<b>Description</b>	<b>Score</b>
<b>EPHS 6: Enforce Laws and Regulations</b>	<b>55.52</b>
<b>6.1 Review and Evaluate Laws, Regulations, and Ordinances</b>	<b>57.69</b>
<b>6_1_1 Identify public health issues addressed through laws, regulations, or ordinances?</b>	<b>33.33</b>
<b>6_1_2 Access to current compilation of laws, regulations, and ordinances?</b>	<b>97.41</b>
<b>6_1_3 Review the public health laws and regulations every 5 years?</b>	<b>0.00</b>
<b>6_1_4 Access to legal counsel?</b>	<b>100.00</b>
<b>6.2 Involvement in Improvement of Laws, Regs and Ordinances</b>	<b>40.56</b>
<b>6_2_1 Identify local public health issues not adequately addressed through existing laws, regulations, and ordinan</b>	<b>33.33</b>
<b>6_2_2 Participated in the development or modification of laws, regulations or ordinances?</b>	<b>55.00</b>
<b>6_2_3 Provide technical assistance to legislative, regulatory or advocacy groups?</b>	<b>33.33</b>
<b>6.3 Enforce laws, Regulations and Ordinances</b>	<b>68.33</b>
<b>6_3_1 Authority to enforce public health laws, regulations, or ordinances?</b>	<b>61.11</b>
<b>6_3_2 Assure enforcement activities are conducted in a timely manner?</b>	<b>66.67</b>
<b>6_3_3 Provide information to individuals and organizations about public health laws, regulations, and ordinances?</b>	<b>84.44</b>
<b>6_3_4 Reviewed the activities of institutions and businesses in the community?</b>	<b>61.11</b>
<b>EPHS 7: Link People to Needed Personal Health Services</b>	<b>33.84</b>

*Centers for Disease Control and Prevention*

*Public Health Practice Program Office*

*Division of Public Health Systems Development and Research*

*National Public Health Performance Standards Program*

*1-800-PHPPO-49 or 1-800-747-7649*

*NPHPSP Local Public Health System Performance Assessment Instrument*  
**Summary of Performance Scores by EPHS and Indicators**

*New Jersey State : NJ0721*

*Date Submitted: 20SEP2005*

<b>Description</b>	<b>Score</b>
<b>7.1 Identification of Populations with Barriers to System</b>	<b>52.67</b>
<b>7_1_1 Identify any populations who may encounter barriers?</b>	<b>52.67</b>
<b>7.2 Identifying Personal Health Service Needs of Population</b>	<b>18.89</b>
<b>7_2_1 Defined personal health service needs for all of its catchment areas?</b>	<b>0.00</b>
<b>7_2_2 Assessed the extent personal health services are being provided?</b>	<b>56.67</b>
<b>7_2_3 Identify the personal health services of populations who encounter barriers to personal health services?</b>	<b>0.00</b>
<b>7.3 Assuring Linkage of People to Personal Health Services</b>	<b>29.97</b>
<b>7_3_1 Assure the provision of needed personal health services?</b>	<b>45.67</b>
<b>7_3_2 Provide outreach and linkage services for the community?</b>	<b>37.50</b>
<b>7_3_3 Initiatives to enroll eligible beneficiaries in state Medicaid or medical assistance programs?</b>	<b>66.67</b>
<b>7_3_4 Assure the coordinated delivery of personal health services?</b>	<b>0.00</b>
<b>7_3_5 Conducted an analysis of age-specific participation in preventive services?</b>	<b>0.00</b>
<b>EPHS 8: Assure a Competent Workforce</b>	<b>51.71</b>
<b>8.1 Workforce Assessment</b>	<b>9.81</b>
<b>8_1_1 Conduct a workforce assessment within past three years?</b>	<b>29.44</b>
<b>8_1_2 Gaps within the public and personal health workforce been identified?</b>	<b>0.00</b>

*Centers for Disease Control and Prevention*

*Public Health Practice Program Office*

*Division of Public Health Systems Development and Research*

*National Public Health Performance Standards Program*

*1-800-PHPPO-49 or 1-800-747-7649*

*NPHPSP Local Public Health System Performance Assessment Instrument*  
**Summary of Performance Scores by EPHS and Indicators**

*New Jersey State : NJ0721*

*Date Submitted: 20SEP2005*

<b>Description</b>	<b>Score</b>
<b>8_1_3 Results of the workforce assessment disseminated?</b>	<b>0.00</b>
<b>8.2 Public Health Workforce Standards</b>	<b>88.00</b>
<b>8_2_1 Aware of and in compliance with guidelines and/or licensure/certification requirements for personnel?</b>	<b>100.00</b>
<b>8_2_2 Organizations developed written job standards and/or position descriptions?</b>	<b>100.00</b>
<b>8_2_3 Agency developed job standards and/or position descriptions?</b>	<b>76.67</b>
<b>8_2_4 Organizations conduct performance evaluations?</b>	<b>100.00</b>
<b>8_2_5 Agency conduct performance evaluations?</b>	<b>63.33</b>
<b>8.3 Continuing Education, Training and Mentoring</b>	<b>61.84</b>
<b>8_3_1 Identify education and training needs?</b>	<b>70.40</b>
<b>8_3_2 Local governmental public health entity provide opportunities for personnel to develop core public health co</b>	<b>61.11</b>
<b>8_3_3 Incentives provided to the workforce to participate in educational and training experiences?</b>	<b>49.17</b>
<b>8_3_4 Opportunities for interaction between LPHS organization staff and faculty from academic and research institu</b>	<b>66.67</b>
<b>8.4 Public Health Leadership Development</b>	<b>47.18</b>
<b>8_4_1 Promote the development of leadership skills?</b>	<b>45.37</b>
<b>8_4_2 Promote collaborative leadership?</b>	<b>43.33</b>
<b>8_4_3 Opportunities to provide leadership in areas of expertise or experience?</b>	<b>66.67</b>
<b>8_4_4 Opportunities to develop community leadership through and mentoring?</b>	<b>33.33</b>

*Centers for Disease Control and Prevention*

*Public Health Practice Program Office*

*Division of Public Health Systems Development and Research*

*National Public Health Performance Standards Program*

*1-800-PHPP0-49 or 1-800-747-7649*

*NPHPSP Local Public Health System Performance Assessment Instrument*  
**Summary of Performance Scores by EPHS and Indicators**

*New Jersey State : NJ0721*

*Date Submitted: 20SEP2005*

<b>Description</b>	<b>Score</b>
<b>EPHS 9: Evaluate Effectiveness, Accessibility and Quality</b>	<b>18.27</b>
<b>9.1 Evaluation of Population-Based Services</b>	<b>8.33</b>
9_1_1 Evaluated population-based health services?	0.00
9_1_2 Assess community satisfaction with population-based health services?	0.00
9_1_3 Identify gaps in the provision of population-based health services?	33.33
9_1_4 Use the results of the evaluation in the development of their strategic and operational plans?	0.00
<b>9.2 Evaluation of Personal Health Care Services</b>	<b>38.13</b>
9_2_1 Evaluated personal health services for the community?	76.67
9_2_2 Specific personal health care services in the community evaluated against established criteria?	80.67
9_2_3 Assess client satisfaction with personal health services?	0.00
9_2_4 Use information technology to assure quality of personal health services?	33.33
9_2_5 Use the results of the evaluation in the development of their strategic and operational plans?	0.00
<b>9.3 Evaluation of Local Public Health System</b>	<b>8.33</b>
9_3_1 Identified community organizations or entities that contribute to the delivery of the EPHS?	33.33
9_3_2 Evaluation of the LPHS conducted every three to five years?	0.00
9_3_3 Linkages and relationships among organizations that comprise the LPHS assessed?	0.00
9_3_4 Use results from the evaluation process to guide community health improvements?	0.00

*Centers for Disease Control and Prevention*

*Public Health Practice Program Office*

*Division of Public Health Systems Development and Research*

*National Public Health Performance Standards Program*

*1-800-PHPP0-49 or 1-800-747-7649*

*NPHPSP Local Public Health System Performance Assessment Instrument*  
**Summary of Performance Scores by EPHS and Indicators**

*New Jersey State : NJ0721*

*Date Submitted: 20SEP2005*

<b>Description</b>	<b>Score</b>
<b>EPHS 10: Research for New Insights and Innovative Solutions</b>	<b>8.98</b>
<b>10.1 Fostering Innovation</b>	<b>26.94</b>
<b>10_1_1 Encourage staff to develop new solutions to health problems in the community?</b>	<b>41.11</b>
<b>10_1_2 Proposed to research organizations one or more public health issues for inclusion in their research agenda?</b>	<b>33.33</b>
<b>10_1_3 Identify and/or monitor “best practices” developed by other public health agencies or organizations?</b>	<b>33.33</b>
<b>10_1_4 Encourage community participation in the development or implementation of research?</b>	<b>0.00</b>
<b>10.2 Linkage with Institutions of Higher Learning and Research</b>	<b>0.00</b>
<b>10_2_1 Partner with at least one institution of higher learning and/or research organization?</b>	<b>0.00</b>
<b>10_2_2 Develop relationships with institutions of higher learning and/or research organizations?</b>	<b>0.00</b>
<b>10_2_3 Encourage proactive interaction between the academic and practice communities?</b>	<b>0.00</b>
<b>10.3 Capacity for Epidemiological, Policy and Service Research</b>	<b>0.00</b>
<b>10_3_1 Access to researchers?</b>	<b>0.00</b>
<b>10_3_2 Resources to facilitate research within the LPHS?</b>	<b>0.00</b>
<b>10_3_3 Plan for the dissemination of research findings to public health colleagues?</b>	<b>0.00</b>
<b>10_3_4 Evaluate research activities?</b>	<b>0.00</b>
<b>Average Total Performance Score</b>	<b>39.56</b>

*Centers for Disease Control and Prevention*

*Public Health Practice Program Office*

*Division of Public Health Systems Development and Research*

*National Public Health Performance Standards Program*

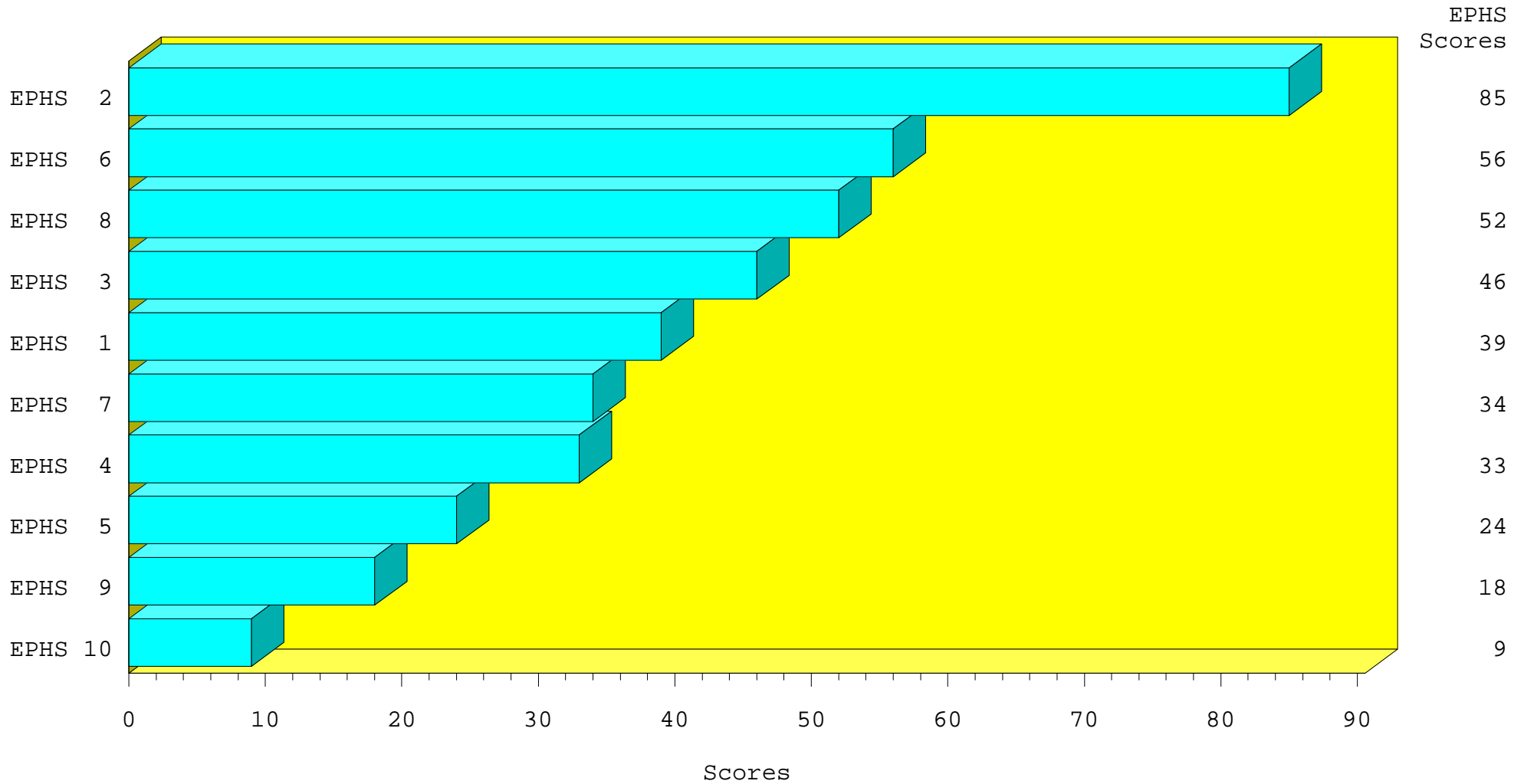
*1-800-PHPP0-49 or 1-800-747-7649*

# NPHPSP Local Public Health System Performance Assessment Instrument

Essential Public Health Service (EPHS) Summary Scores (arranged in descending order)

New Jersey State : NJ0721

Date Submitted: 20SEP2005



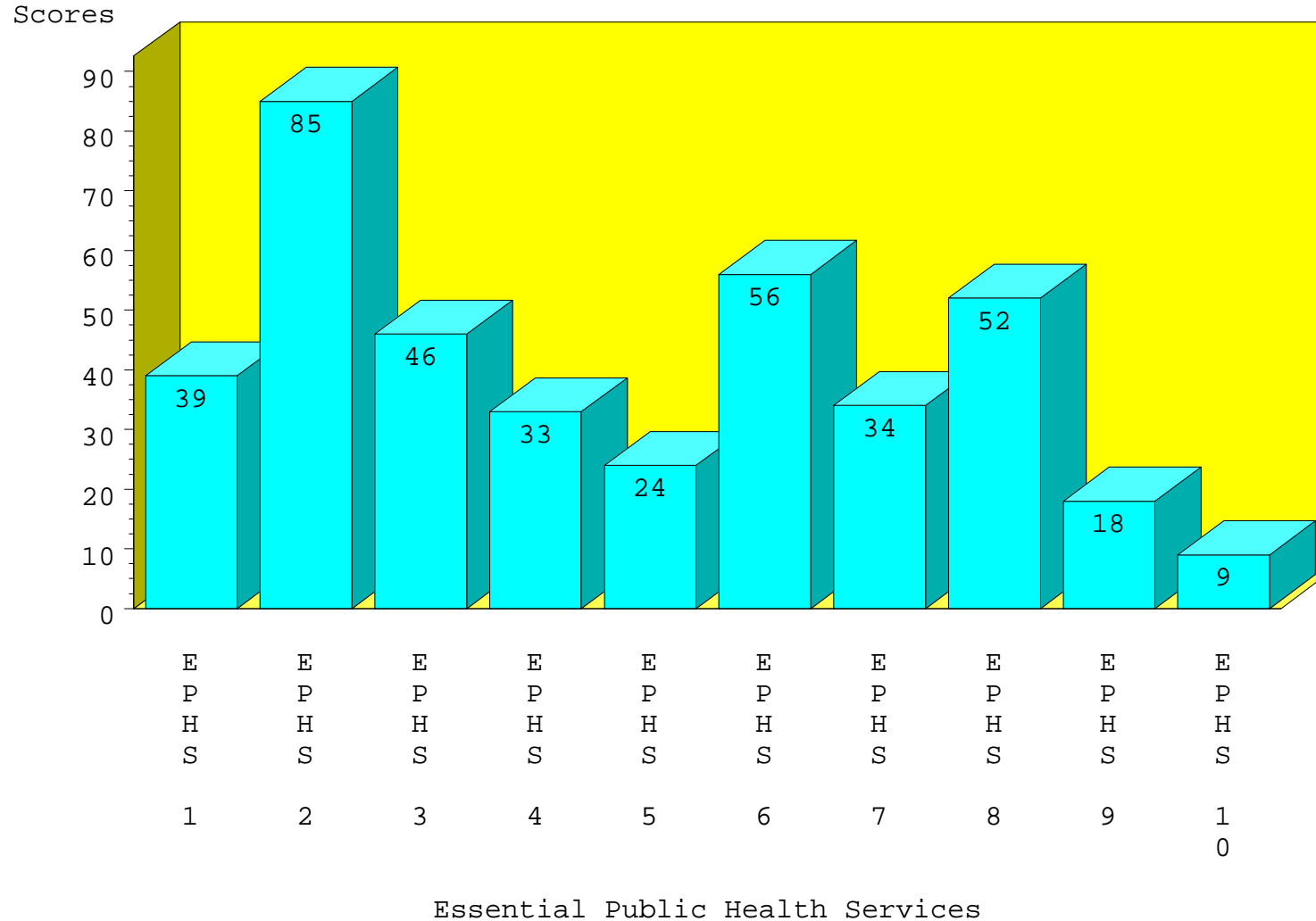
Centers for Disease Control and Prevention  
Public Health Practice Program Office  
Division of Public Health Systems Development and Research  
National Public Health Performance Standards Program  
1-800-PHPP0-49 or 1-800-747-7649

# NPHPSP Local Public Health System Performance Assessment Instrument

Summary Scores at the Essential Service Level

New Jersey State : NJ0721

Date Submitted: 20SEP2005



***NPHPSP Local Public Health System Performance Assessment Instrument  
Summary of Performance on Model Standards***

*New Jersey State : NJ0721*

*Date Submitted: 20SEP2005*

<b>Essential Public Health Service</b>	<b>Indicator/Model Standard Met</b>	<b>Indicator/Model Standard Substantially Met</b>	<b>Indicator/Model Standard Partially Met</b>	<b>Indicator/Model Standard Not Met</b>
<b>1: Monitor Health Status</b>		<b>1.3 Maintenance of Population Health Registries</b>	<b>1.1 Population Based Community Health Profile</b>	<b>1.2 Access to and Utilization of Current Technology</b>
<b>2: Diagnose and Investigate Health Problems</b>	<b>2.2 Plan for Public Health Emergencies</b>			
	<b>2.4 Laboratory Support for Investigation of Health Threats</b>	<b>2.1 Identification and Surveillance of Health Threats</b>		
		<b>2.3 Investigate and Respond to Public Health Emergencies</b>		
<b>3: Inform, Educate, and Empower People</b>			<b>3.1 Health Education</b>	
			<b>3.2 Health Promotion Activities</b>	
<b>4: Mobilize Community Partnerships</b>			<b>4.1 Constituency Development</b>	
			<b>4.2 Community Partnerships</b>	
<b>5: Develop Policies and Plans</b>				<b>5.1 Governmental Presence at Local Level</b>
			<b>5.2 Public Health Policy Development</b>	<b>5.3 Community Health Improvement Process</b>
			<b>5.4 Strategic Planning and Alignment</b>	

*Centers for Disease Control and Prevention*

*Public Health Practice Program Office*

*Division of Public Health Systems Development and Research*

*National Public Health Performance Standards Program*

*1-800-PHPP0-49 or 1-800-747-7649*

***NPHPSP Local Public Health System Performance Assessment Instrument  
Summary of Performance on Model Standards***

*New Jersey State : NJ0721*

*Date Submitted: 20SEP2005*

<b>Essential Public Health Service</b>	<b>Indicator/Model Standard Met</b>	<b>Indicator/Model Standard Substantially Met</b>	<b>Indicator/Model Standard Partially Met</b>	<b>Indicator/Model Standard Not Met</b>
<b>6: Enforce Laws and Regulations</b>		<b>6.3 Enforce laws, Regulations and Ordinances</b>	<b>6.1 Review and Evaluate Laws, Regulations, and Ordinances</b>	
			<b>6.2 Involvement in Improvement of Laws, Regs and Ordinances</b>	
<b>7: Link People to Needed Personal Health Services</b>			<b>7.1 Identification of Populations with Barriers to System</b>	<b>7.2 Identifying Personal Health Service Needs of Population</b>
			<b>7.3 Assuring Linkage of People to Personal Health Services</b>	
<b>8: Assure a Competent Workforce</b>	<b>8.2 Public Health Workforce Standards</b>	<b>8.3 Continuing Education, Training and Mentoring</b>	<b>8.4 Public Health Leadership Development</b>	<b>8.1 Workforce Assessment</b>
<b>9: Evaluate Effectiveness, Accessibility and Quali</b>				<b>9.1 Evaluation of Population-Based Services</b>
			<b>9.2 Evaluation of Personal Health Care Services</b>	<b>9.3 Evaluation of Local Public Health System</b>
<b>10: Research for New Insights and Innovative Soluti</b>				<b>10.2 Linkage with Institutions of Higher Learning and Research</b>
			<b>10.1 Fostering Innovation</b>	<b>10.3 Capacity for Epidemiological, Policy and Service Research</b>

*Centers for Disease Control and Prevention*

*Public Health Practice Program Office*

*Division of Public Health Systems Development and Research*

*National Public Health Performance Standards Program*

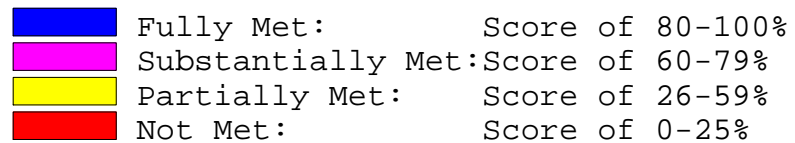
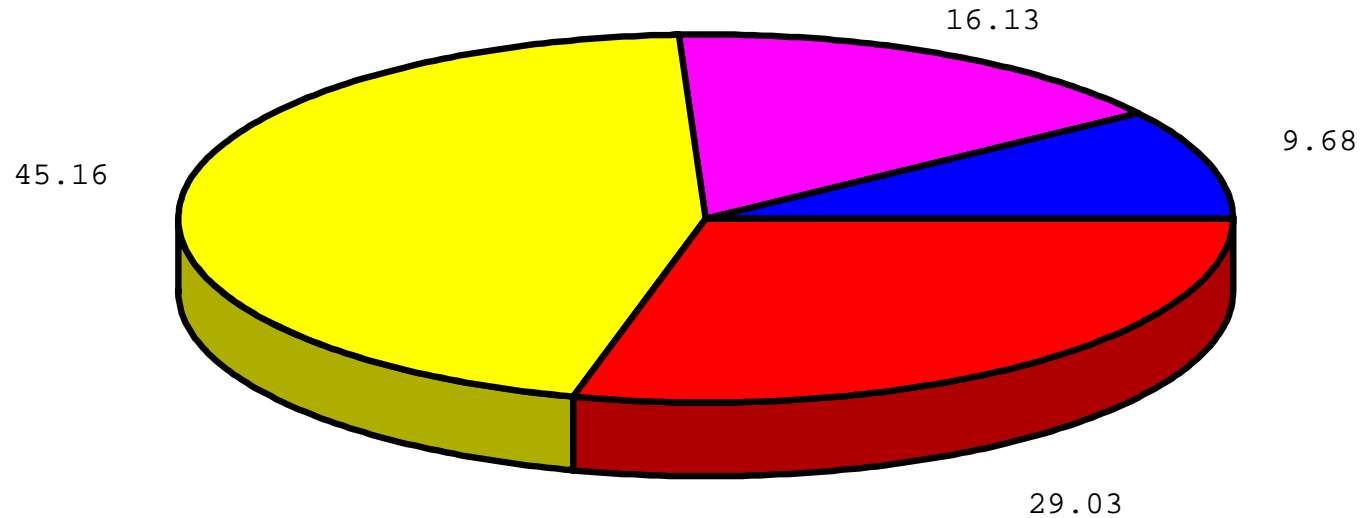
*1-800-PHPPO-49 or 1-800-747-7649*

# NPHPSP Local Public Health System Performance Assessment Instrument

Summary of Performance on Model Standards

New Jersey State : NJ0721

Date Submitted: 20SEP2005



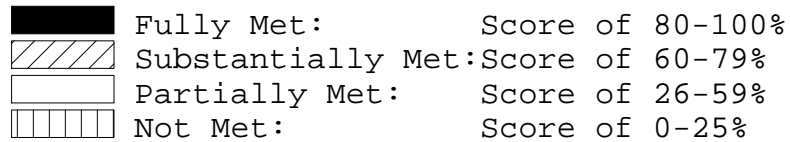
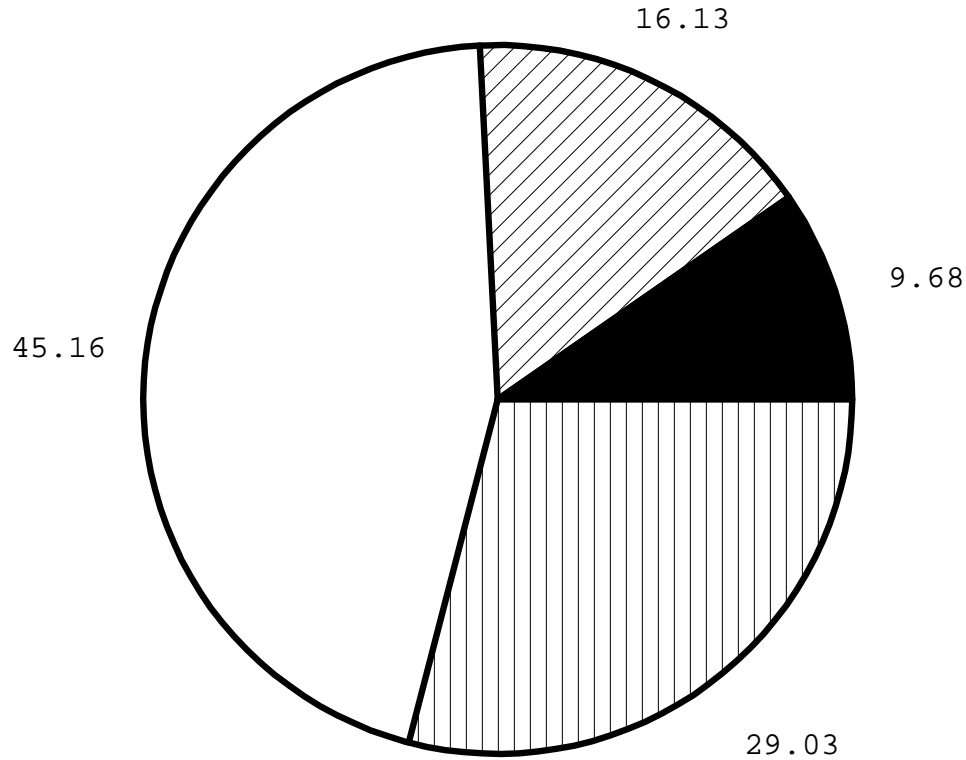
Centers for Disease Control and Prevention  
Public Health Practice Program Office  
Division of Public Health Systems Development and Research  
National Public Health Performance Standards Program  
1-800-PHPP0-49 or 1-800-747-7649

# NPHPSP Local Public Health System Performance Assessment Instrument

Summary of Performance on Model Standards

New Jersey State : NJ0721

Date Submitted: 20SEP2005



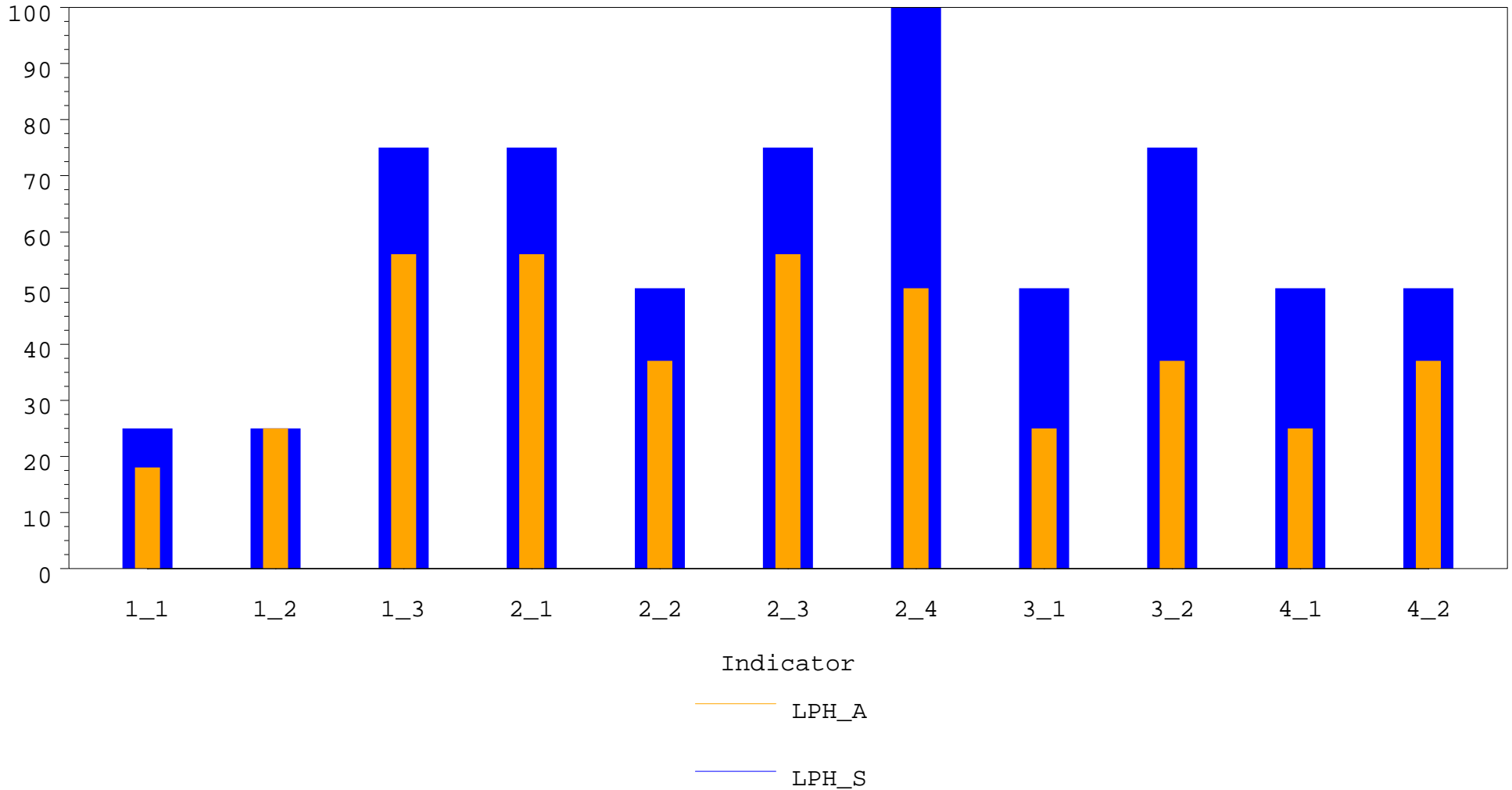
Centers for Disease Control and Prevention  
Public Health Practice Program Office  
Division of Public Health Systems Development and Research  
National Public Health Performance Standards Program  
1-800-PHPP0-49 or 1-800-747-7649

# NPHPSP Local Public Health System Performance Assessment Instrument

System Performance and Agency Contribution - Summary Question Responses

New Jersey State : NJ0721

Date Submitted: 20SEP2005



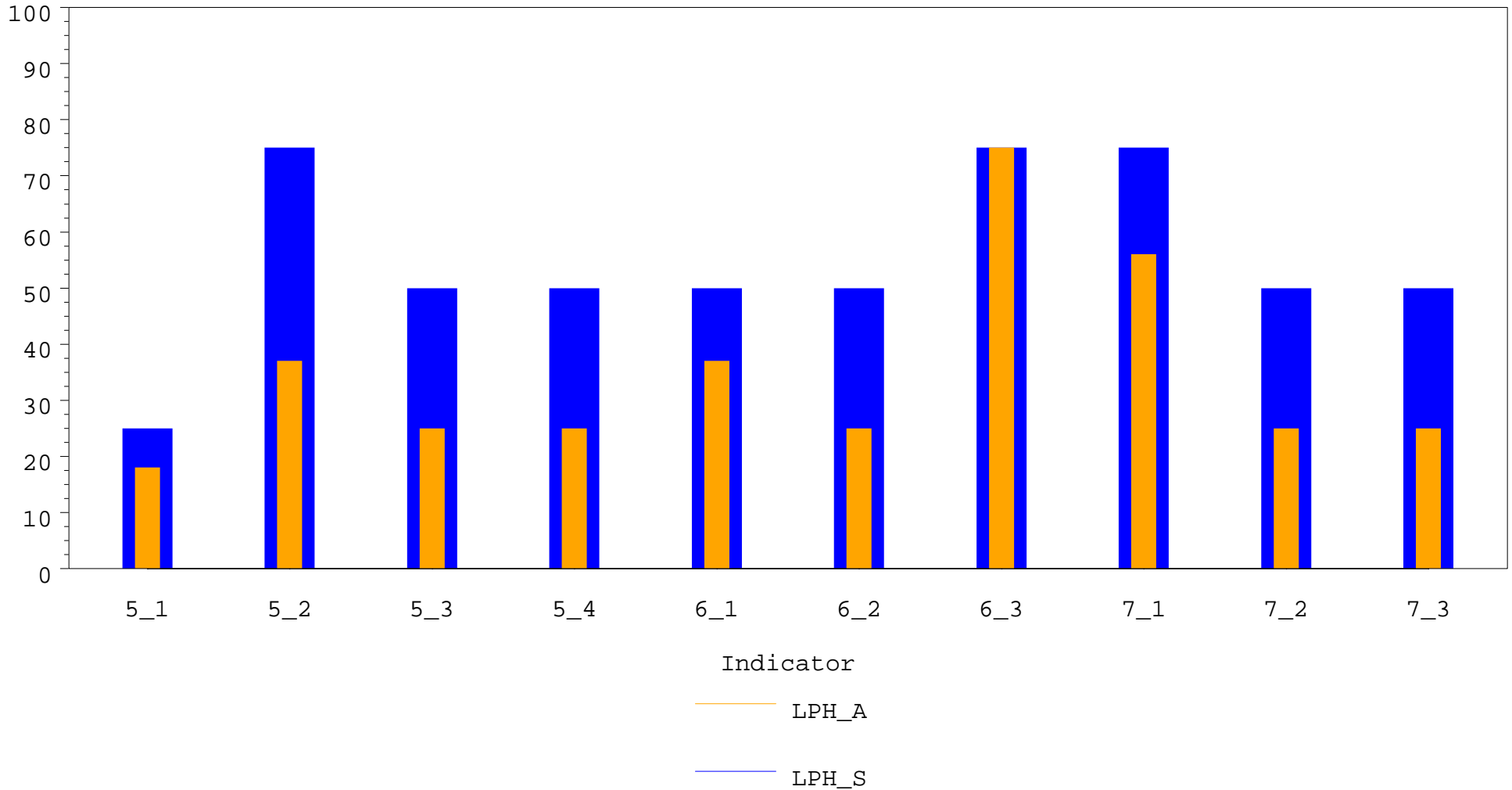
Centers for Disease Control and Prevention  
Centers for Disease Control and Prevention  
Public Health Practice Program Office  
Division of Public Health Systems Development and Research  
National Public Health Performance Standards Program  
1-800-PHPP0-49 or 1-800-747-7649

# NPHPSP Local Public Health System Performance Assessment Instrument

System Performance and Agency Contribution - Summary Question Responses

New Jersey State : NJ0721

Date Submitted: 20SEP2005



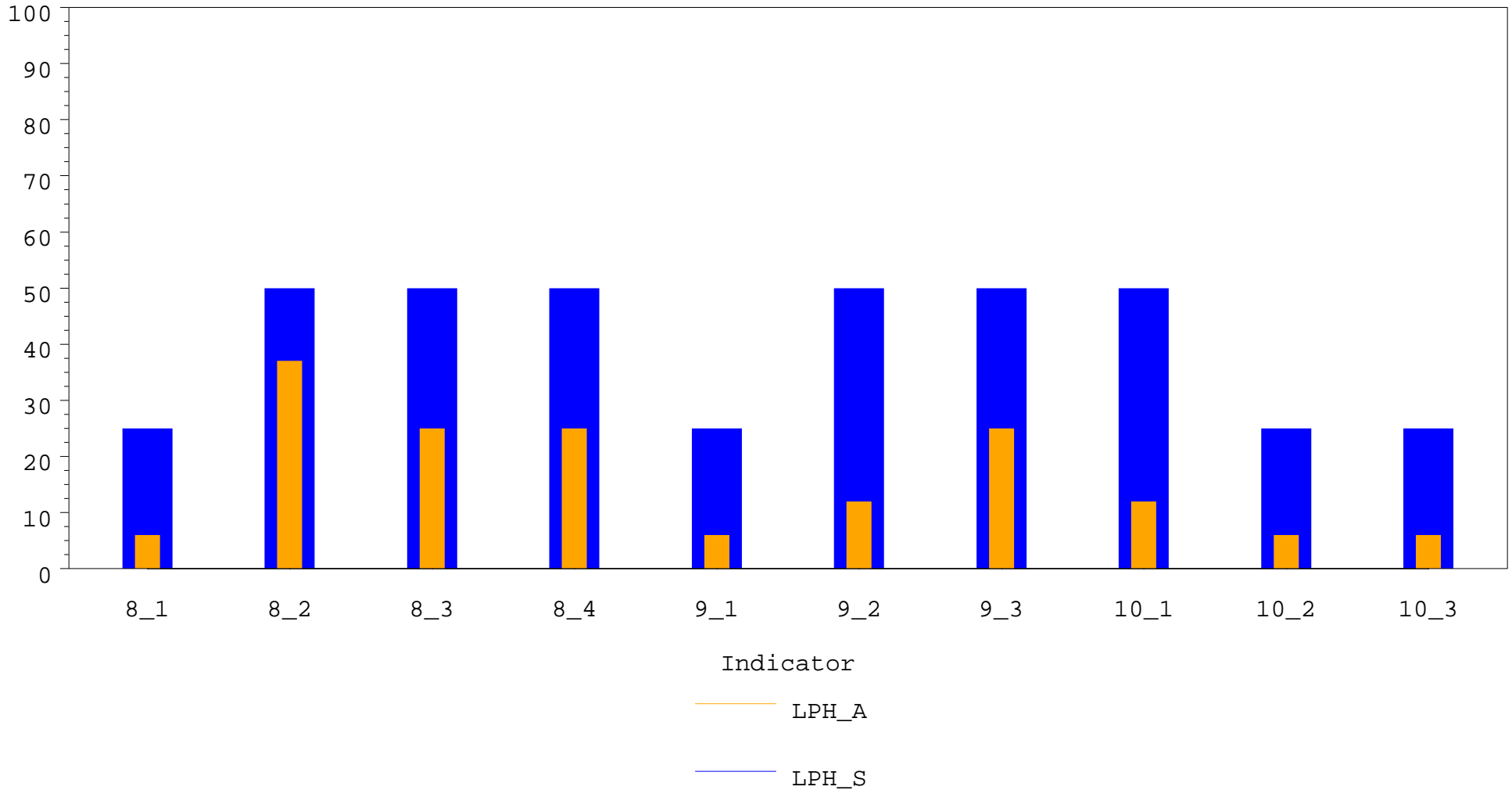
Centers for Disease Control and Prevention  
Centers for Disease Control and Prevention  
Public Health Practice Program Office  
Division of Public Health Systems Development and Research  
National Public Health Performance Standards Program  
1-800-PHPP0-49 or 1-800-747-7649

# NPHPSP Local Public Health System Performance Assessment Instrument

System Performance and Agency Contribution - Summary Question Responses

New Jersey State : NJ0721

Date Submitted: 20SEP2005



Centers for Disease Control and Prevention  
Centers for Disease Control and Prevention  
Public Health Practice Program Office  
Division of Public Health Systems Development and Research  
National Public Health Performance Standards Program  
1-800-PHPP0-49 or 1-800-747-7649